

# DICAR CRUSHLESS WHEELS



## Asitrade

<u>Dicar Part #</u>	<u>OD x ID x Width</u>	<u>Comments</u>
JS/1335D70	3.0 X 1.65 X 1.0	
JS/1333D40	4.0 X 1.85 X 1.75	(USES 2 RS/6204 BRNG)



JS/1335D40                      JS/1335D60                      JS/1335D70

## Agnati

<u>Dicar Part #</u>	<u>OD x ID x Width</u>	<u>Comments</u>
JS/716D50	5.11 X 2.59 X 1.96	
JS/630D50	5.82 X 2.32 X 1.96	
JS/1041D50	5.86 X 1.85 X 2.0	(uses (2) #6204 Brngs)
JS/1039D50	5.98 X 2.25 X 2.0	(w/brng pocket on each side)

## BHS

<u>Dicar Part #</u>	<u>OD x ID x Width</u>	<u>Comments</u>
JS/601D40	6.5 X 2.625 X 2.0	
JS/1272D50	7.09 X 2.56 X 1.97	
JS/1460D50	13.25 X 8.6 X 2.75	



JS/601D40                      JS/1460D40                      JS/1460D50

Durometers available: 40A-Yellow, 50A-Grey, 60A-Blue, 70A-Green

\*Standard durometers, hub bearings at ends needed

# DICAR CRUSHLESS WHEELS



## Bahmuller

<u>Dicar Part #</u>	<u>OD x ID x Width</u>	<u>Comments</u>
JS/1018D60	2.37 X .866 X .984	
JS/1017D60	2.37 X .875 X .984	
JS/1019D60	2.465 X 1.125 X 1.625	(USES 2 RS/1616NICE BRNGS)
JS/1349D50	3.543 X 1.77 X 1.18	
JS/1050D60	3.543 X 1.181 X 1.181	
JS/1007D60	3.56 X 1.75 X 2.25	
JS/983D60	4.0 X 1.102 X 1.772	
JS/1340D60	4.921 X 1.77 X 1.96	
JS/1345D50	4.921 X 4.77 X 1.81	
JS/626D60	6.22 X 2.75 X 3.0	
JS/1413D60	6.3 X 1.4 X 3.0	
JS/1372D70	6.3 X 1.4 X 3.0	



JS/1018D60

JS/1018D70

JS/1019D50

JS/1349D50



JS/1050D60

JS/983D60

JS/1340D60

JS/626D60



JS/1413D60

\*Standard durometers, hub bearings at ends needed

# DICAR CRUSHLESS WHEELS



## Bobst

<u>Dicar Part #</u>	<u>OD x ID x Width</u>	<u>Comments</u>
JS/1351D60	4.87 X 3.25 X 3.0	
JS/1344D70	7.28 X 5.12 X 3.94	

## Bostitch

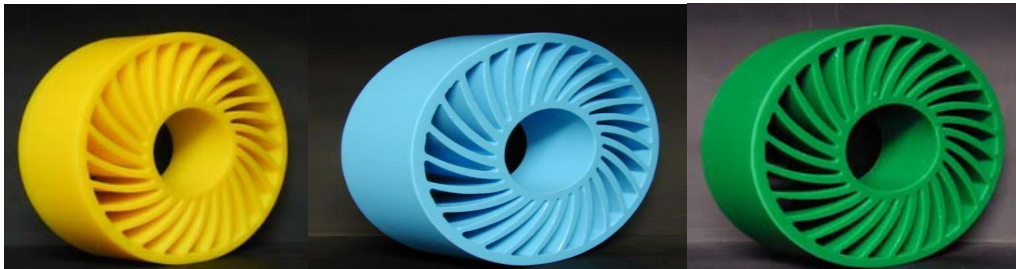
<u>Dicar Part #</u>	<u>OD x ID x Width</u>	<u>Comments</u>
JS/1364D60	4.0 X .960 X 1.875	
JS/998D60*	4.0 X 2.0 X 1.750	
JS/1399D50	4.5 X 3.0 X 1.750	
JS/1437D50	4.7 X 1.25 X 2.0	(Uses 2 RS/1623 BRNGS)



JS/998D60

## Corpart

<u>Dicar Part #</u>	<u>OD x ID x Width</u>	<u>Comments</u>
JS/1318D40	7.935 X 3.0 X 2.0	
JS/495D40	5.560 X 1.20 X 2.30	



JS/1318D40

JS/1318D60

JS/1318D70

## Dorries

<u>Dicar Part #</u>	<u>OD x ID x Width</u>	<u>Comments</u>
JS/1311D50	9.050 X 2.440 X 2.760	Down Stacker

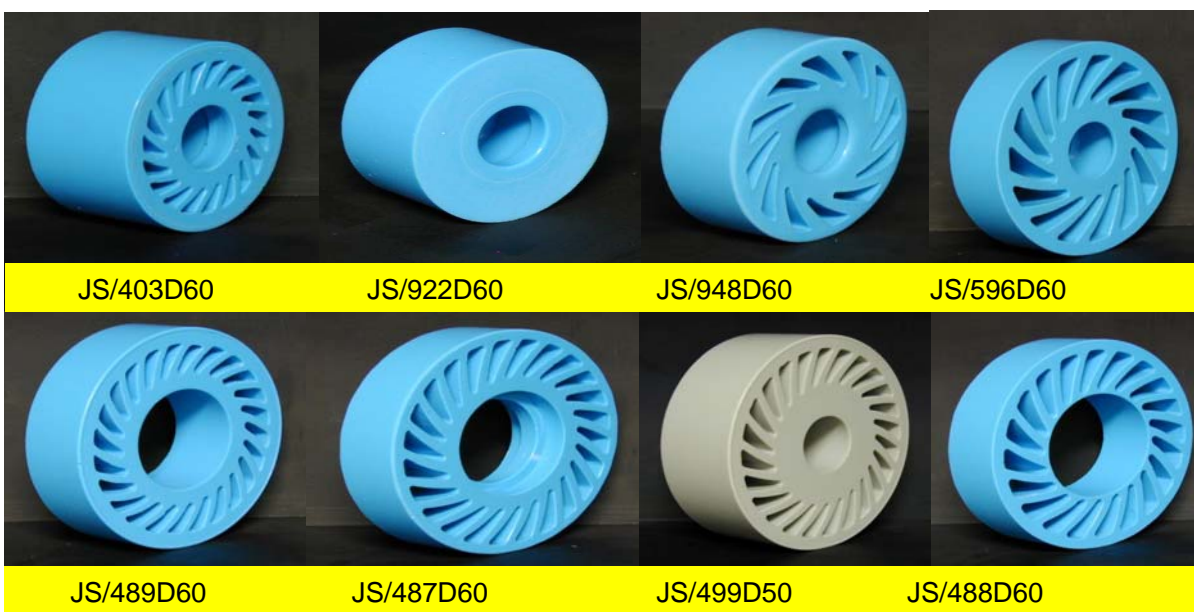
\*Standard durometers, hub bearings at ends needed

# DICAR CRUSHLESS WHEELS



## Curioni

<u>Dicar Part #</u>	<u>OD x ID x Width</u>	<u>Comments</u>
JS/922D60	1.889 X .866 X .984	
JS/948D60	2.952 X 1.26 X 1.023	(uses 2 RS/6201 Brng)
JS/1614D60	3.15 X 1.26 X 1.772	(Uses 2 RS/6201 Brng)
JS/403D60	3.150 X 1.378 X 1.772	(uses 2 RS/6202 Brng)
JS/1342D60*	3.760 X 1.655 X 1.0	
JS/1350D60*	3.760 X 1.655 X 1.50	
JS/497D50	4.626" X 2.362" X 2"	
JS/207D60	4.72 X 1.65 X 1.18	
JS/596D60	4.75 X 1.65 X 1.18	
JS/475D50	4.843 X 2.165 X 1.378	
JS/489D60*	4.921 X 2.244 X 1.378	
JS/1490D60	5.0 X 2.375 X 1.5	
JS/952D40	5.039 X 3.07 X 3.937	
JS/476D50	5.906 X 2.559 X 1.378	(W/RIB)
JS/486D70	5.944 X 2.610 X 1.378	
JS/482D70	5.590 X 2.610 X 1.968	
JS/487D70	5.590 X 2.610 X 1.181	
JS/1693D50	5.72 X 4.40 X 3.53	
JS/491D60*		
JS/492D60*	5.78 X 2.61 X 1.377	
JS/499D50	5.787" X 1.535" X 2"	
JS/488D60*	5.984 X 2.992 X 1.378	
JS/1411D50	6.417 X 2.559 X 1.968	
JS/1326D50	7.874 X 6.774 X 1.968	
JS/490D60*	8.268 X 4.173 X 1.378	



\*Standard durometers, hub bearings at ends needed

# DICAR CRUSHLESS WHEELS



## Earhardt & Leimer

<u>Dicar Part #</u>	<u>OD x ID x Width</u>	<u>Comments</u>
JS/601D50	6.5 X 2.625 X 2.0	



JS/601D50

## Emba

<u>Dicar Part #</u>	<u>OD x ID x Width</u>	<u>Comments</u>
JS/994D60	4.0 X 1.8 X 1.75	
JS/640D40	4.0 X 1.80 X 1.75	(THRU HOLE, NO BRNG)
JS/621D50	6.625 X 4.87 X 4.0	
JS/1037D60	8.66 X 4.72 X 1.96	

## Esko

<u>Dicar Part #</u>	<u>OD x ID x Width</u>	<u>Comments</u>
JS/616D60	6.30 X 2.362 X 1.575	

## Flexoline (Advance)

<u>Dicar Part #</u>	<u>OD x ID x Width</u>	<u>Comments</u>
JS/612D40	5.90 X 1.625 X 2.0	
JS/1307D50	7.95 X 1.75 X 3.5	

\*Standard durometers, hub bearings at ends needed

# DICAR CRUSHLESS WHEELS



## Fosber

<u>Dicar Part #</u>	<u>OD x ID x Width</u>	<u>Comments</u>
JS/1610D50	6.654 X 3.543 X 1.969	Knife
JS/1385D50	7.125 X 3.625 X 2.0	
JS/1683D60	11.417 X 6.890 X 1.988	Stacker (old style)
JS/1687D60	11.417 X 6.890 X 1.988	Stacker

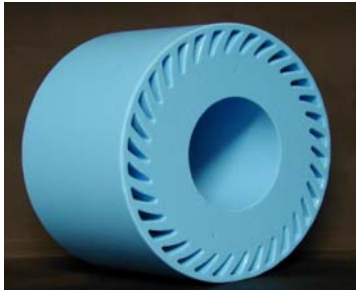


JS/1610D50

JS/1683D50

## Genco

<u>Dicar Part #</u>	<u>OD x ID x Width</u>	<u>Comments</u>
JS/626D60	6.22 X 2.755 X 3.0	



JS/626D60

## General

<u>Dicar Part #</u>	<u>OD x ID x Width</u>	<u>Comments</u>
JS/901D40	4.0 X 1.1 X 1.9	



JS/901D40

\*Standard durometers, hub bearings at ends needed

# DICAR CRUSHLESS WHEELS



## Geo. Martin (George Martin)

<u>Dicar Part #</u>	<u>OD x ID x Width</u>	<u>Comments</u>
JS/629D50	6.5 X 2.625 X 3.22	Stacker
JS/952D40	5.039 X 3.070 X 3.937	Knife delivery
JS/953D40	137mm X 78mm X 100mm	Knife delivery (METRIC VERSION OF JS/952D40)



JS/953D40

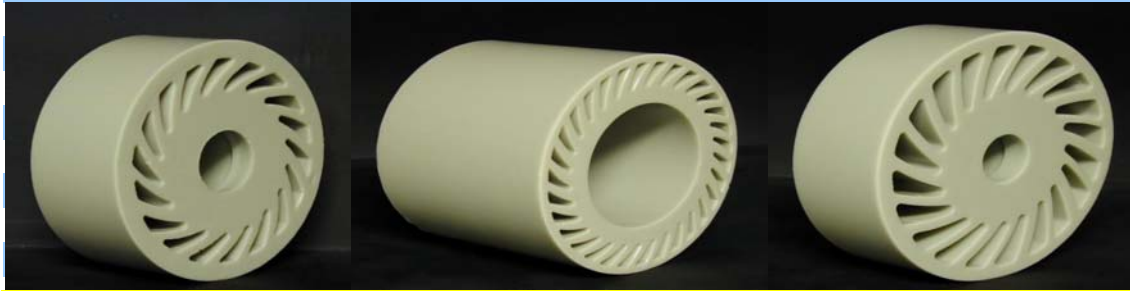
\*Standard durometers, hub bearings at ends needed

# DICAR CRUSHLESS WHEELS



## Grant

<u>Dicar Part #</u>	<u>OD x ID x Width</u>	<u>Comments</u>
JS/1369D50	4 X 1.37 X 1.75	(Uses 2-6202 BRNG)
JS/1285D50	5.18 x 3.0 x 4.0	Folding section
JS/1280D50	6.0 x 1.37 x 2.0	(Uses 2-1621 BRNG)



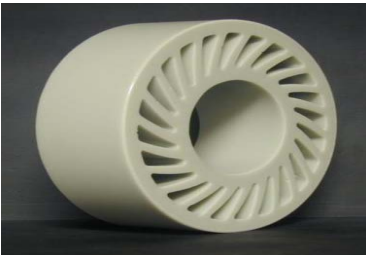
JS/1369D50

JS/1285D50

JS/1280D50

## Greenline

<u>Dicar Part #</u>	<u>OD x ID x Width</u>	<u>Comments</u>
JS/496D60*	5.565 X 1.5" X 2.300"	
JS/496D50	5.565 X 1.5" X 2.300	
JS/1310D50	5.875" X 2.6" X 2"	
JS/597D50	6.5 X 1.625 X 2.0	(USES 2-7512 BRNG)



JS/1310D50

## Gopfert

<u>Dicar Part #</u>	<u>OD x ID x Width</u>	<u>Comments</u>
JS/407D70	5.944 X 2.610 X 1.378	

## Hycorr

<u>Dicar Part #</u>	<u>OD x ID x Width</u>	<u>Comments</u>
JS/1693D50	5.720 X 4.440 X 3.535	

## Interfic

<u>Dicar Part #</u>	<u>OD x ID x Width</u>	<u>Comments</u>
JS/1393D40	5.905 X 3.543 X 4.92	Tension Unit

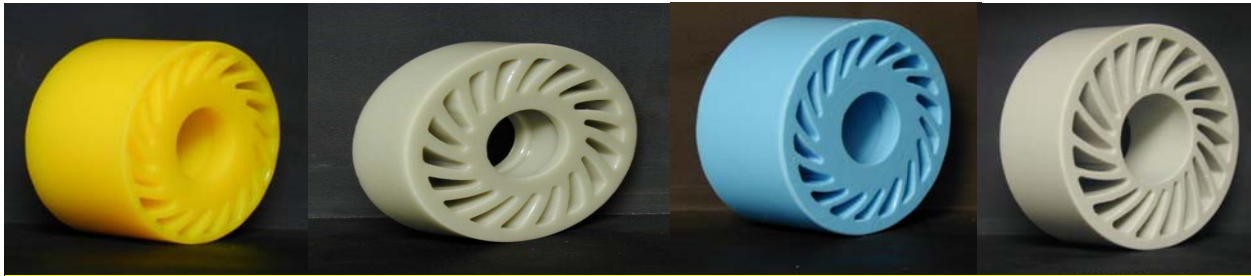
\*Standard durometers, hub bearings at ends needed

# DICAR CRUSHLESS WHEELS



## Isowa

<u>Dicar Part #</u>	<u>OD x ID x Width</u>	<u>Comments</u>
JS/401D50	3.0 X 1.175 X .433	
JS/1361D40	3.0 X 1.4 X 1.50	
JS/1023D40	3.38 X 2.04 X 2.0	(Uses 2 #UC20556 Brngs)
JS/991D60	3.75 X 1.50 X 1.75	
JS/1677D50	4.0 X 1.6 X .90	
JS/609D40	4.0 X 1.60 X 1.75	
JS/1676D40	4.0 X 1.605 X 1.75	
JS/1319D60*	4.0 X 1.4 X 1.740	50" PS-6 (COSMOS) (Uses 2 RS/6004 Brngs)
JS/610D40	5.90 X 1.61 X 1.75	
JS/601D50	6.5 X 2.625 X 2.0	KNIFE (INFEED)
JS/618D50	6.5 X 4.50 X 4.0	
JS/1474D40	6.61 X 2.57 X 1.80	KNIFE (W/AL INSERT)
JS/1494D50	6.669 X 3.25 X 2.0	
JS/951D50	9.840 X 5.91 X 2.0	



JS/991D40      JS/1677D50      JS/1319D60      JS/601D50



JS/1494D50      JS/951D50

## K&H Machinery

<u>Dicar Part #</u>	<u>OD x ID x Width</u>	<u>Comments</u>
JS/1040D60	3.93 X 2.05 X 1.38	
JS/1316D60	6.57 X 2.31 X 1.97	

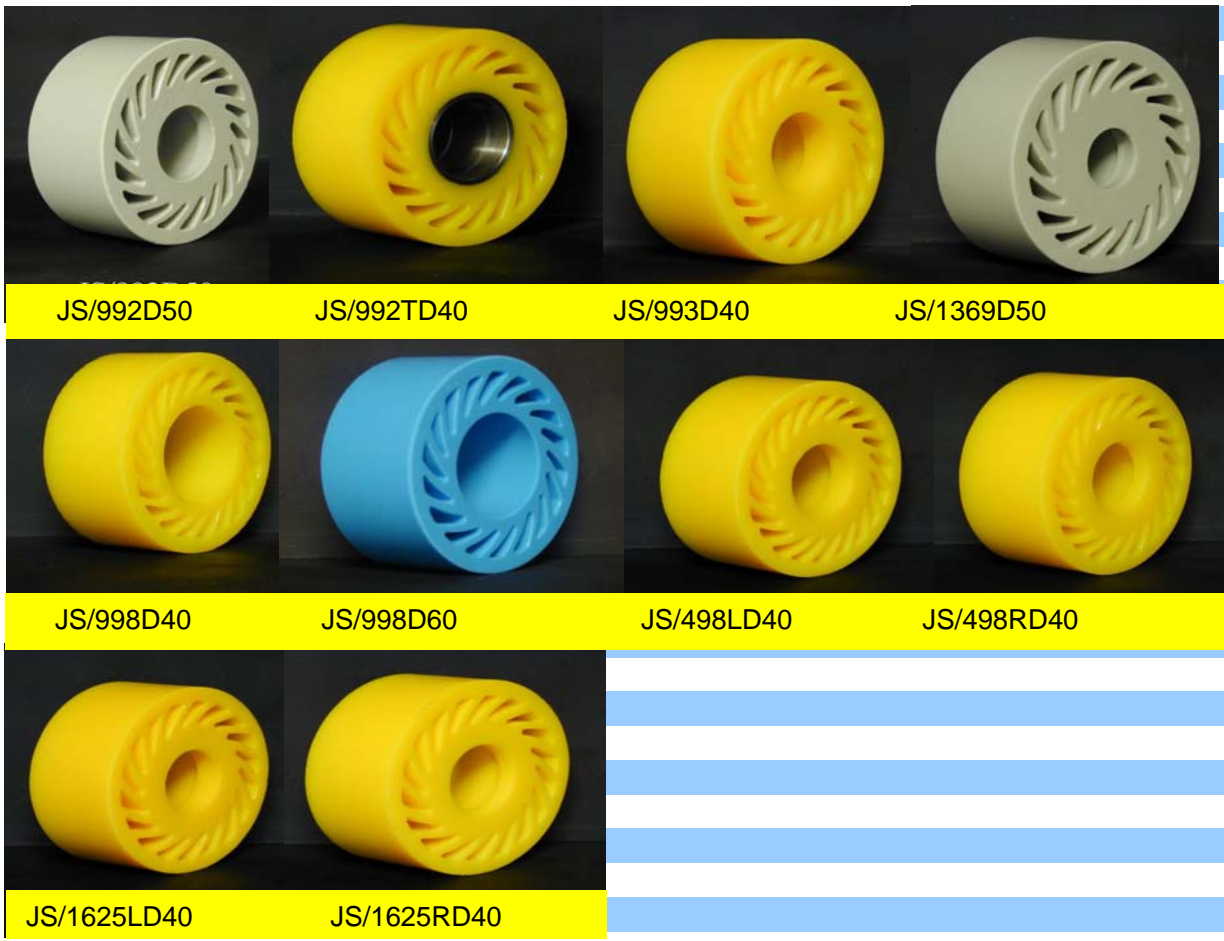
\*Standard durometers, hub bearings at ends needed

# DICAR CRUSHLESS WHEELS



## Koppers

<u>Dicar Part #</u>	<u>OD x ID x Width</u>	<u>Comments</u>
JS/982D50	3.75 X 2.0 X 1.125	
JS/992TD60	4.0 X 1.5 X 1.75	(W/SLEEVE)
JS/993D40	4.0 X 1.75 X 1.75	(Uses 1 RS/22812 Brng)
JS/1369D40	4.0 x 1.375 x 1.75	(uses 2#6202or2#1621 Brg)
JS/997D70	4.0 X 2.0 X 1.5	
JS/998D40	4" X 2" X 1.750"	(USES HUB)
JS/998D60*	4" X 2" X 1.750"	(USES RS/999 HUB & RS/7R12 BRNG)
JS/405D50	4.0 X 2.30 X 1.25	(FOR USE W/HUB)
JS/498LD40	4" X 1.75" X 1.76"	LEFT (Uses 2 RS/6204 Brng)
JS/498RD40	4" X 1.75" X 1.76"	RIGHT (Uses 2 RS/6204 Brng)
JS/1625LD40	4" X 1.65" X 1.76"	(USES 2 #1635 or (2) 22812 BEARINGS)
JS/1625RD40	4" X 1.65" X 1.76"	
JS/1374D60	5.18 X 3.25 X 4.0	
JS/1692D60	5.830 X 4.0 X 4.0	(USES 2 #1635 or (2) 22812 BEARINGS)
JS/1389D50	8.25 X 6.0 X 4.0	



\*Standard durometers, hub bearings at ends needed

# DICAR CRUSHLESS WHEELS



## Langston

<u>Dicar Part #</u>	<u>OD x ID x Width</u>	<u>Comments</u>
JS/1510D70	2.25" X .80" X 3.2"	
JS/978D50	4" X 1.5" X 2"	Mini
JS/998D40	4" X 2 X 1.75"	
JS/998D60*	4" X 2" X 1.75"	
JS/503D60	4" X 2.30" X 1.75"	
JS/1327D50	5.32 X 3.5 X 4.310	Double Backer
JS/620D50	5.350 X 1.374 X 3.767	Cut Off Knife
JS/494D50	5.780 X 2.610 X 2.0	Cut Off Knife
JS/485D50	5.98" X 3.0" X 2.0"	Corr. Rider Roll
JS/1331D50	6.0 X 1.80 X 1.875	Cut Off Knife
JS/613D50	6.22 X 4.64 X 3.0	Cut Off Knife
JS/617D50	6.5 X 2.496 X 2.0	Cut Off Knife
JS/1362D50	6.61"X3.07"X1.80"	Delivery Knife
JS/493D50	9.46" X 2.62" X 2.0"	Cut Off Knife



JS/978D50      JS/998D40      JS/998D60      JS/503D60



JS/620D50      JS/485D50      JS/1331D60      JS/617D40



JS/1362D60      JS/493D50

\*Standard durometers, hub bearings at ends needed

# DICAR CRUSHLESS WHEELS



## Mckinely

<u>Dicar Part #</u>	<u>OD x ID x Width</u>	<u>Comments</u>
JS/1022D60	3.75" X 1.625" X 1.0"	24 x 78" (Uses RS/7R12 Brng)
JS/697D60	3.75"X 1.37" X 1.187"	24 x 78" (Uses RS/1621 Brng)
JS/1308D50	6.0" x 1.6" x 1.875"	66 x 190" (Uses RS/1630 Brng)
JS/1301D70	6.0" x 1.5" x 1.0"	66 x 190" (Uses RS/7R12 Brng)



JS/1301D70

\*Standard durometers, hub bearings at ends needed

# DICAR CRUSHLESS WHEELS



## Marquip

<u>Dicar Part #</u>	<u>OD x ID x Width</u>	<u>Comments</u>
JS/601D50	6.5" X 2.625" X 2"	Cut Off Knife
JS/601D40	6.5" X 2.625" X 2"	Cut Off Knife
JS/601TD50	6.5" X 2.625" X 2"	Cut Off Knife w/ insert
JS/601T		Insert for JS/601
JS/1325D50	13.0"X8.5" X2.75"	Downstacker
JS/1325D60	13.0"X8.5" X2.75"	Downstacker
JS/1325TD50	13.0" X 8.625" X 2.75"	Downstacker w/ insert



JS/601D50      JS/601D40      JS/601D60      JS/601TD50



JS/1325TD40      JS/1325TD50      JS/601T      JS/1325D60



JS/1325D40      JS/1325D50

\*Standard durometers, hub bearings at ends needed

# DICAR CRUSHLESS WHEELS



## Marumatsu / Shinko

<u>Dicar Part #</u>	<u>OD x ID x Width</u>	<u>Comments</u>
JS/1324D50	4.921 X 2.756 X .984	
JS/1321D60	4.921 X 2.756 X 3.0	
JS/1414D40	6.3 X 2.52 X 1.57	
JS/1359D50	6.82 X 4.4 X 1.875	



JS/1324D50

JS/1321D60

JS/1414D40

## MHI Mitsubishi

<u>Dicar Part #</u>	<u>OD x ID x Width</u>	<u>Comments</u>
JS/1674D40	3.150 X 1.338 X 1.260	
JS/1675D80	3.150 X 1.338 X 1.260	Folder Gluer
JS/605D50	6.25" X 2.0" X 1.6"	Cutoff Knife w/out hub
JS/604D60*	6.3 X 1.90 X 1.560 (Min. Order Qty. 25 pcs.)	Cutoff Knife** Min 40 pcs. w/ hub
JS/607D60*	6.3 X 4.5 X 3.88	Cutoff Knife ** Min 40 pcs. w/ hub
JS/1609D50	6.30 X 4.409 X 4.0	Corrugator
JS/749D60*	6.693 X 3.734 X 3.15	Cutoff Knife ** Min 40 pcs. w/ hub
JS/750D60*	6.693 X 3.734 X 2.55	Cutoff Knife ** Min 40 pcs. w/ hub
JS/1347D60	6.693 X 3.73 X 2.55	Cutoff Knife
JS/1348	6.693 X 3.73 X 3.15	Cutoff Knife
JS/140**	7.27 X 4.65 X 4.72	Cutoff Knife ** Min 40 pcs. w/ hub



JS/1674D60

JS/604D40

JS/604D60



JS/607D60

JS/1609D50

\*Standard durometers, hub bearings at ends needed

# DICAR CRUSHLESS WHEELS



## Peters

<u>Dicar Part #</u>	<u>OD x ID x Width</u>	<u>Comments</u>
JS/598	4.724 X3.070 X 1.968	
JS/599D40	6.25 X 4.0 X 4.0	
JS/602D40	6.29" X 1.96" X 3.54"	
JS/603D50	6.29" X 1.96" X 1.77"	
JS/606D40	6.30" X 3.85" X 3.85	
JS/1320D50	6.30 X 2.047 X 1.772	



JS/598D40

JS/599D40

JS/606D40

\*Standard durometers, hub bearings at ends needed

# DICAR CRUSHLESS WHEELS



## S&S

<u>Dicar Part #</u>	<u>OD x ID x Width</u>	<u>Comments</u>
JS/1006D60	3.50 X 1.625 X 2.375 (R/963)	(USES 2 RS/7R12 BRNG)
JS/995D60	4.0 X 1.5 X 1.0 USES RS/7R12 BRNG	
JS/992D70	4.0 X 1.5 X 1.75 USES 2 RS/22812 Brng	Front Rail
JS/203D50	4.25 X 1.75 X 1.75	(Uses (1) 22812 or (1) 1635 Brng)
JS/204D60	4.25 X 2.0 X 1.75	
JS/707D60	4.25 X 1.5 X 1 USE W/ RS/7R12 BRNG	ZLB
JS/702D70	4.5" X 1.625" X 1" Use w/RS/7R12 Brng	
JS/804D60	4.5 X 1.8 X 1.75 USES (2) 204PP7 Brng 4.5 X 1.8 X 1.75 USE W/ RS/204PP7	
JS/706D60	BRG	
JS/1341D60	5.350 X 3.50 X 3.950	38" ZLM Feed Roll
JS/200D70	6" X 3.8" X 1" (USE RS/201 HUB)	
JS/1355D40	6.0 X 3.858 X 3.960	Cut Off Knife
JS/205D50	6.0 X 3.59 X .875	
JS/1301D70	6" X 1.5" X 1" (USE W/ RS/7R12 BRG)	
JS/1299D60	6.141" X 1.6" X 1.0"	Euro rail Version
JS/1496D70	7.25 X 5.125 X 2.0	50"



\*Standard durometers, hub bearings at ends needed

# DICAR CRUSHLESS WHEELS



## Simon

<u>Dicar Part #</u>	<u>OD x ID x Width</u>	<u>Comments</u>
JS/1682D50	10.236 X 7.0 X 4.0	
JS/1010D40	2.10 X .05 X 1.25	Folder Gluer
JS/1011D40	2.10 X .05 X .625	Folder Gluer
JS/1009D40	2.10 X .875 X 1.85	Folder Gluer
JS/1012D40	2.45 X .875 X 1.85	Folder Gluer
JS/994D60	4.0 X 1.8 X 1.75	Cutoff Knife
JS/1336D50	4.606 X 2.95 X 3.0	Downstacker
JS/1343D60*	4.13 X 1.88 X 1.85 (USE ___ HUB)	Cutoff Knife
JS/1370D50	5.51"X3.07"X3.35"	Cutoff Knife
JS/1375D50	5.90 X 3.150 X 1.93	Knife Feed Out
JS/1380D50	5.905 X 1.969 X 1.90	Hold Down Wheel
JS/1408D50	6.31 X 4.0 X 3.0	Cutoff Knife
JS/1485D50	6.6 X 3.06 X 1.937	Cutoff Knife
JS/1506D50	6.0 X 3.8 X 1.5	Stacker



JS/1011D40

JS/1336D50

JS/1343D60

JS/1375D50



JS/1380D50

\*Standard durometers, hub bearings at ends needed

# DICAR CRUSHLESS WHEELS



## S.A. Martin

<u>Dicar Part #</u>	<u>OD x ID x Width</u>	<u>Comments</u>
JS/699D50	3.85 X 1.4 X .850	
JS/701D40	3.85" X 1.87" X .850"	(MDL 616 AND 718)
JS/701D60*	3.85" X 1.87" X .850"	(MDL 616 AND 718)
JS/704D60*	3.85 X 2.0 X 1.625	(MDL 616 AND 718)
JS/1670D40	3.9 X 1.65 X .85"	Cocast Bearing pocket uses 6004 brg
JS/1678D40	3.9" X 1.65" X .85"	
JS/708D40	3.937 X 1.85 X .885	
JS/711D60	4.0 X 1.87 X .85	(MDL 616 AND 718)
JS/500D50	4.0" X 1.85" X 1.75"	(Uses [1] 6204 BRNG)
JS/700	4.0" X 2" X 1.875"	(MDL 924 AND 922)
JS/709D40	4.015 X 1.909 X .885	(MDL 616)
JS/986D60 (L & R)	4.0 X 1.65 X 1.75	(MDL 924)
JS/985D70	4.0 X 2.0 X 1.299	
JS/998D70	4.0 X 2.0 X 1.75	
JS/1332D70	4.11 X 2.38 X 1.96	Feed Roll
JS/1491D40	4.331 X 2.283 X 1.772	
JS/1371D50	4.625 X 3.0 X 2.10	(MDL 1228)
JS/1382D80	4.626 X 3.071 X 2.0	(MDL 1228)
JS/1436D60	4.60 X 3.0 X 2.75	(MDL 924)
JS/1387D70	4.68 X 2.75 X 2.0	(MDL 1228)
JS/1370D50	5.51" X 3.07" X 3.35"	
JS/1038D50	7.75x1.125x2.250	Stacker (Uses (2)#6383K32 Brngs)
JS/1356D60	6.82 X 5.0 X 4.0	



JS/699D40

JS/699D50

JS/701D40

JS/1670D40



JS/1678D40

JS/1678D60

JS/711D60

JS/500D40



JS/998D70

JS/1038D50

JS/1332D70

\*Standard durometers, hub bearings at ends needed

# DICAR CRUSHLESS WHEELS



## SEC Machine

<u>Dicar Part #</u>	<u>OD x ID x Width</u>	<u>Comments</u>
JS/800D60	3.000 X 1.374 X 1.50	(Uses #1621 Brng)
JS/801D60	3.000 X 1.671 X 1.50	
JS/1353D60	3.665 X 1.374 X 1.50	
JS/697D50	3.75 X 1.374 X 1.25	
JS/1334D60	4.625 X 2.62 X 3.5	

## Serenco

<u>Dicar Part #</u>	<u>OD x ID x Width</u>	<u>Comments</u>
JS/1366D40	4.0 X 1.25 X 2.0	Use w/NSK6201 Part#SEO-1857
JS/1381D40S	4.0 X 1.25 X 1.75	W/NSK6201 BRNG Part#SEO-1857
JS/1415D40	6.340 X 3.858 X 3.0	

## Staley

<u>Dicar Part #</u>	<u>OD x ID x Width</u>	<u>Comments</u>
JS/1601D50	4.60 X 3.22 X 3.0	
JS/1374D50	5.187 X 3.25 X 4.0	
JS/1688D50	10.236 X 7.0 X 1.0	



JS/1601D50

## TCY

<u>Dicar Part #</u>	<u>OD x ID x Width</u>	<u>Comments</u>
JS/1672D60	3.15 X 1.37 X .75	(USES #6202 BRNG)
JS/498LD40	4.0 X 1.75 X 1.75	Counter Ejector Left
JS/498RD40	4.0 X 1.75 X 1.75	Counter Ejector Right
JS/1412D50	6.3 X 2.56 X 1.969	Downstacker
JS/1325D50	13.25 X 8.625 X 2.75	Downstacker
JS/1345TD50	4.921 x 1.77 x 1.18	Separator



JS/498LD40

JS/498RD40

JS/1325D50

## Tecasa

<u>Dicar Part #</u>	<u>OD x ID x Width</u>	<u>Comments</u>
JS/802D70	3.93 X 1.10 X 1.57	Model 2800

\*Standard durometers, hub bearings at ends needed

# DICAR CRUSHLESS WHEELS



## Universal

<u>Dicar Part #</u>	<u>OD x ID x Width</u>	<u>Comments</u>
JS/614D50	6.5 X 1.89 X 1.968	



JS/614D50

## Ward

<u>Dicar Part #</u>	<u>OD x ID x Width</u>	<u>Comments</u>
JS/1019D50	2.46 X 1.125 X 1.7	Use (2) 1616 Brngs
JS/1010D40	2.75 X 1.125 X 1.5	
JS/1386D40	3.9 X .75 X .83	
JS/1660D40	3.9 X 1.1 X .83	Use 1616 Brg.
JS/206D40	4.25 X 1.60 X 3.937	
JS/1695D40	5.5 X 2.625 X 3.375	
JS/1024D60	5.90 X 1.37 X 2.0	Use (2) RS/1621DS Brg.
JS/1034D50	7.874 X 1.65 X 2.0	
JS/1376D50	7.880 X 5.750 X 2.960	
JS/1684D70	10.5 X 1.5 X 4.25	



JS/1019D50      JS/1386D40      JS/1660D40

\*Standard durometers, hub bearings at ends needed

# DICAR CRUSHLESS WHEELS



## YSF Machinery

<u>Dicar Part #</u>	<u>OD x ID x Width</u>	<u>Comments</u>
JS/627D50	6.496 X 4.5 X 4.0 (PART #FS480316)	Model #FS40866
JS/628D50	6.614 X 4.5 X 4.0 (PART #FS480317)	Model #FS40866
JS/1032D50	7.323 X 5.0 X 4.0 (PART #FS511000)	Model #FS551066
JS/1033D50	7.480 X 5.0 X 4.0 (PART #FS511001)	Model #FS551066

\*Standard durometers, hub bearings at ends needed